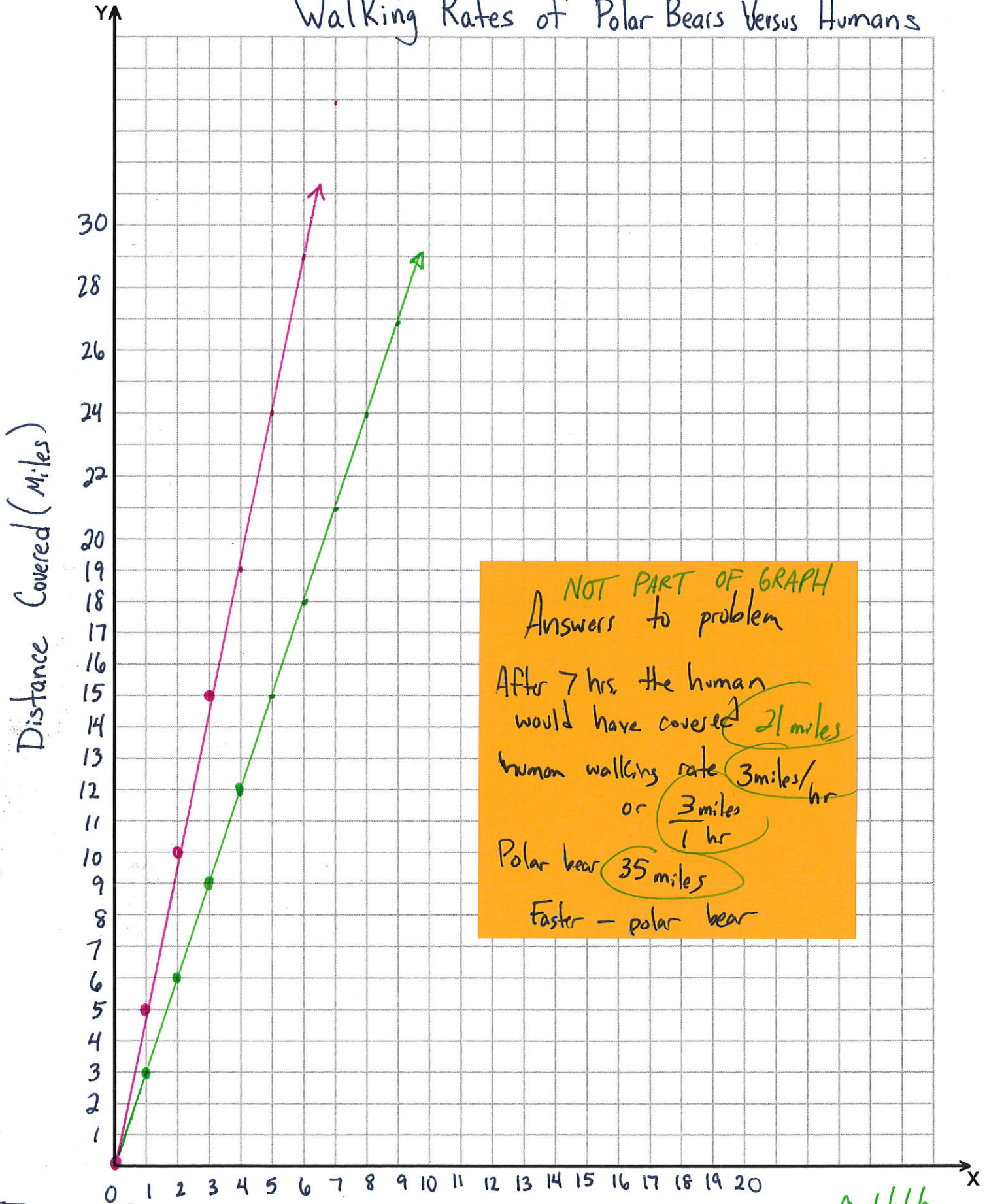


Walking Rates of Polar Bears Versus Humans



NOT PART OF GRAPH
Answers to problem

After 7 hrs. the human
would have covered 21 miles

human walking rate 3 miles/hr
or $\frac{3 \text{ miles}}{1 \text{ hr}}$

Polar bear 35 miles

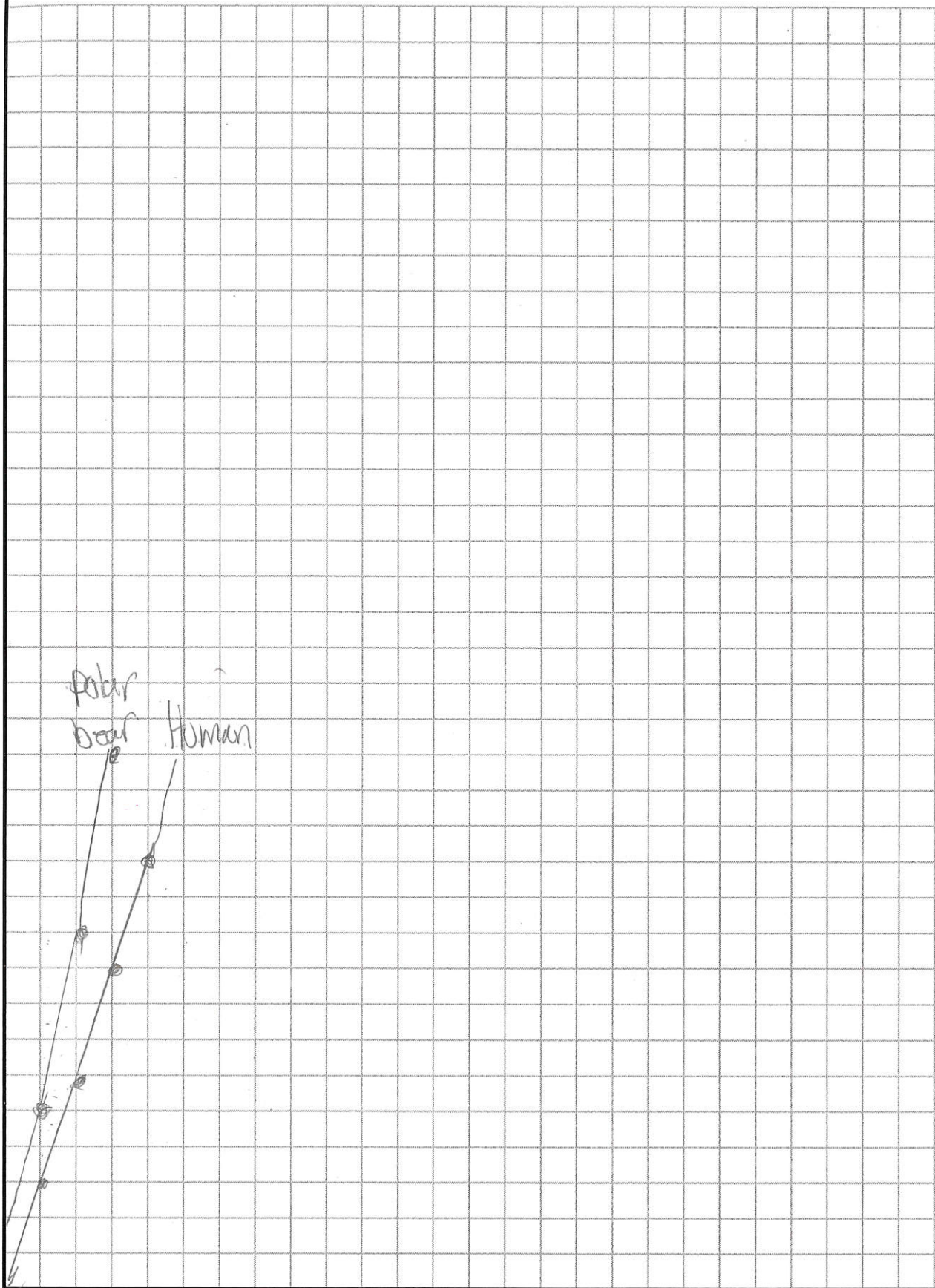
Faster - polar bear

— Polar Bear
— Human

Time (Hours)

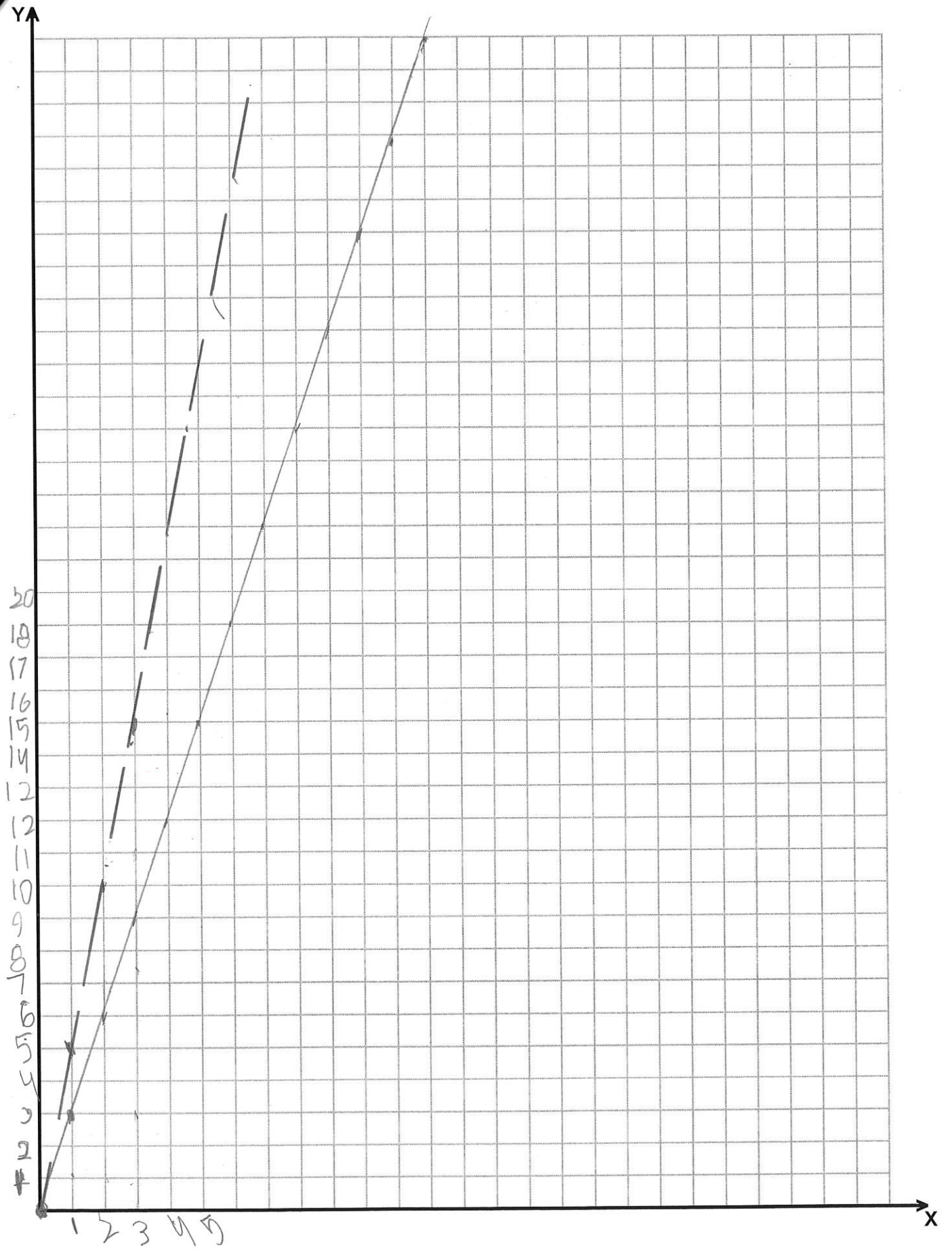


Y↑



1 2 3 4 5 6 7 8 9 10 11 12 13 14 15 16 17 18 19 20 21 22 23 24 25 X



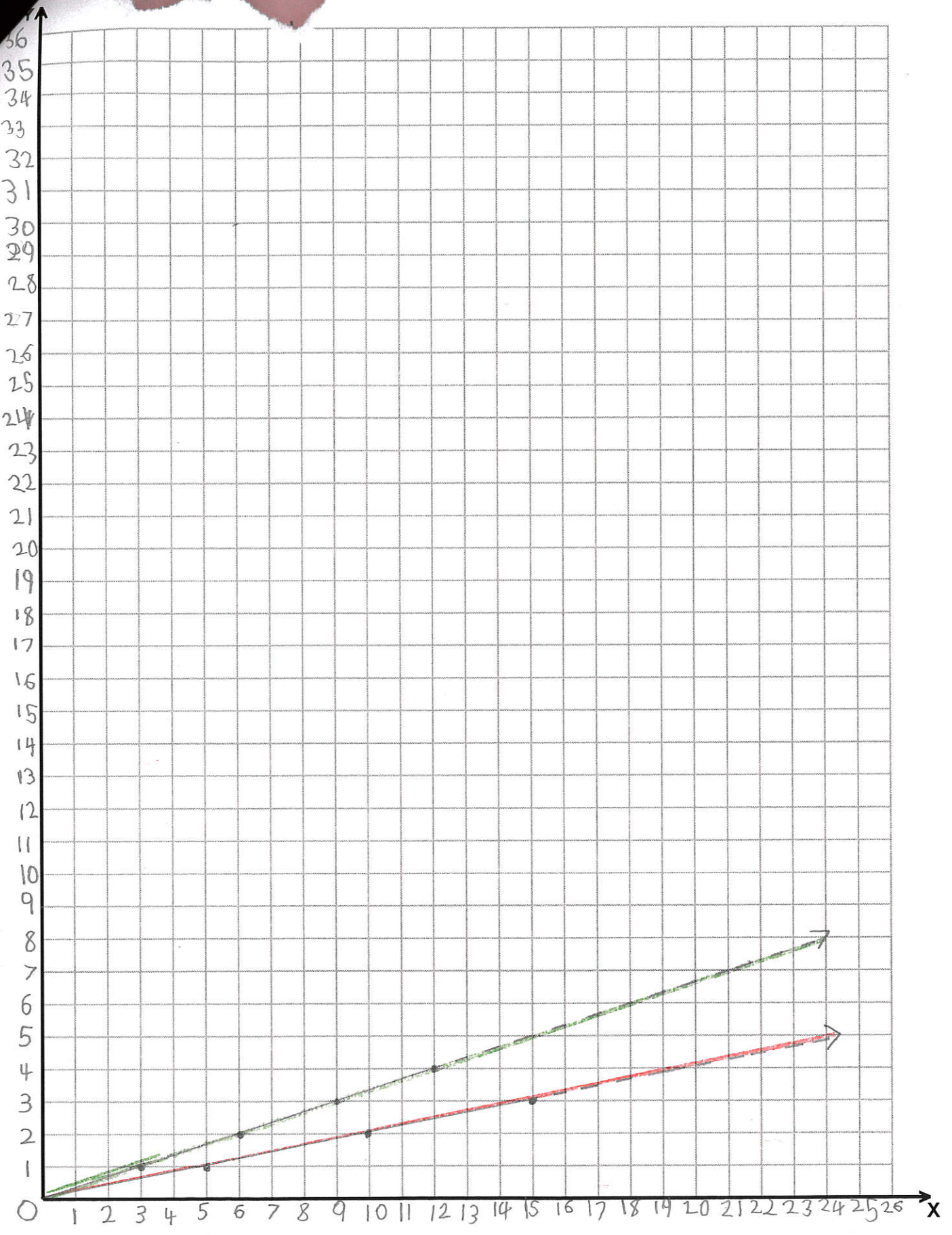


HUMAN ———
 POLAR BEAR - - - -





ich

Time (hours)



key

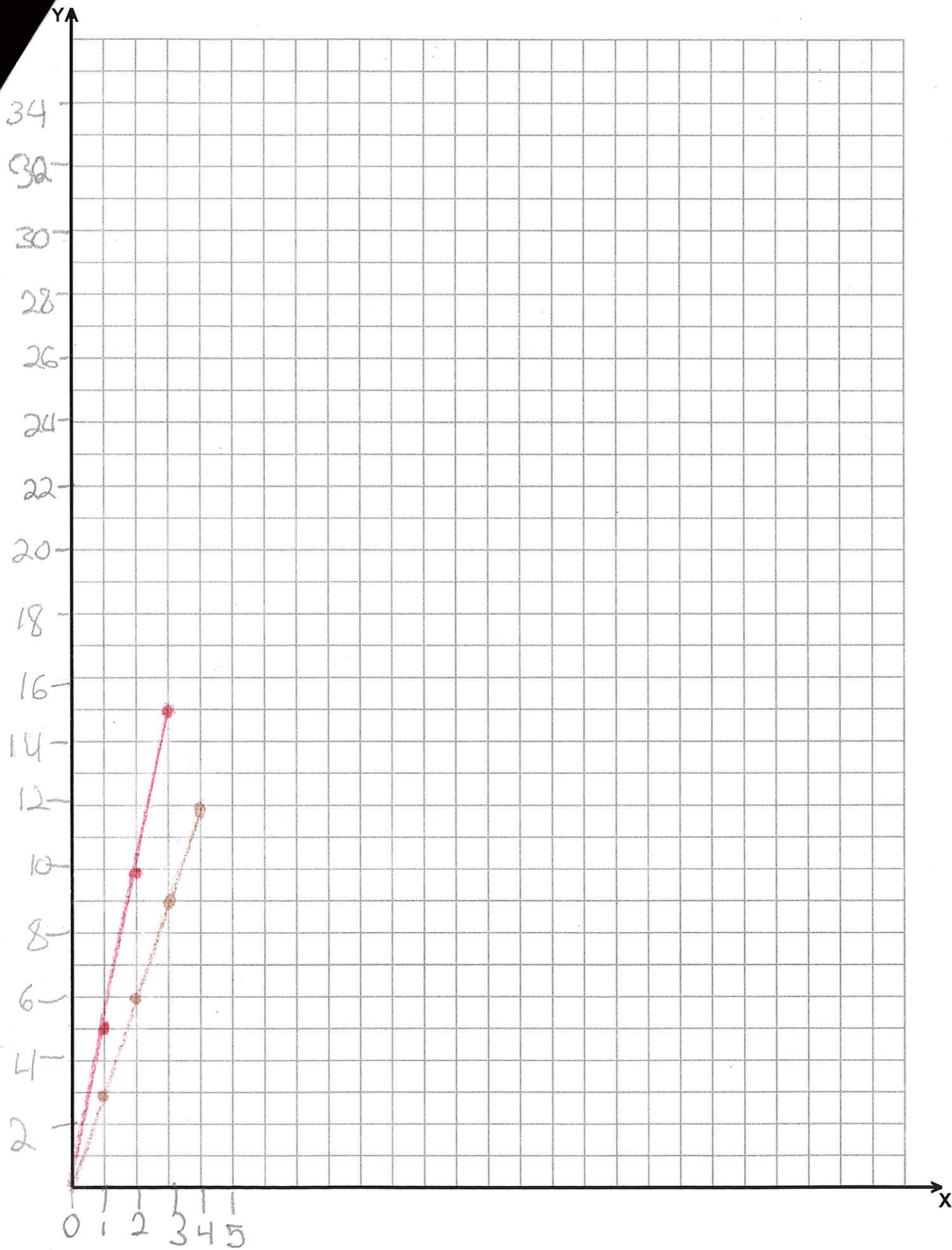
H	P
	

Distance (miles)



Math-Aids.Com



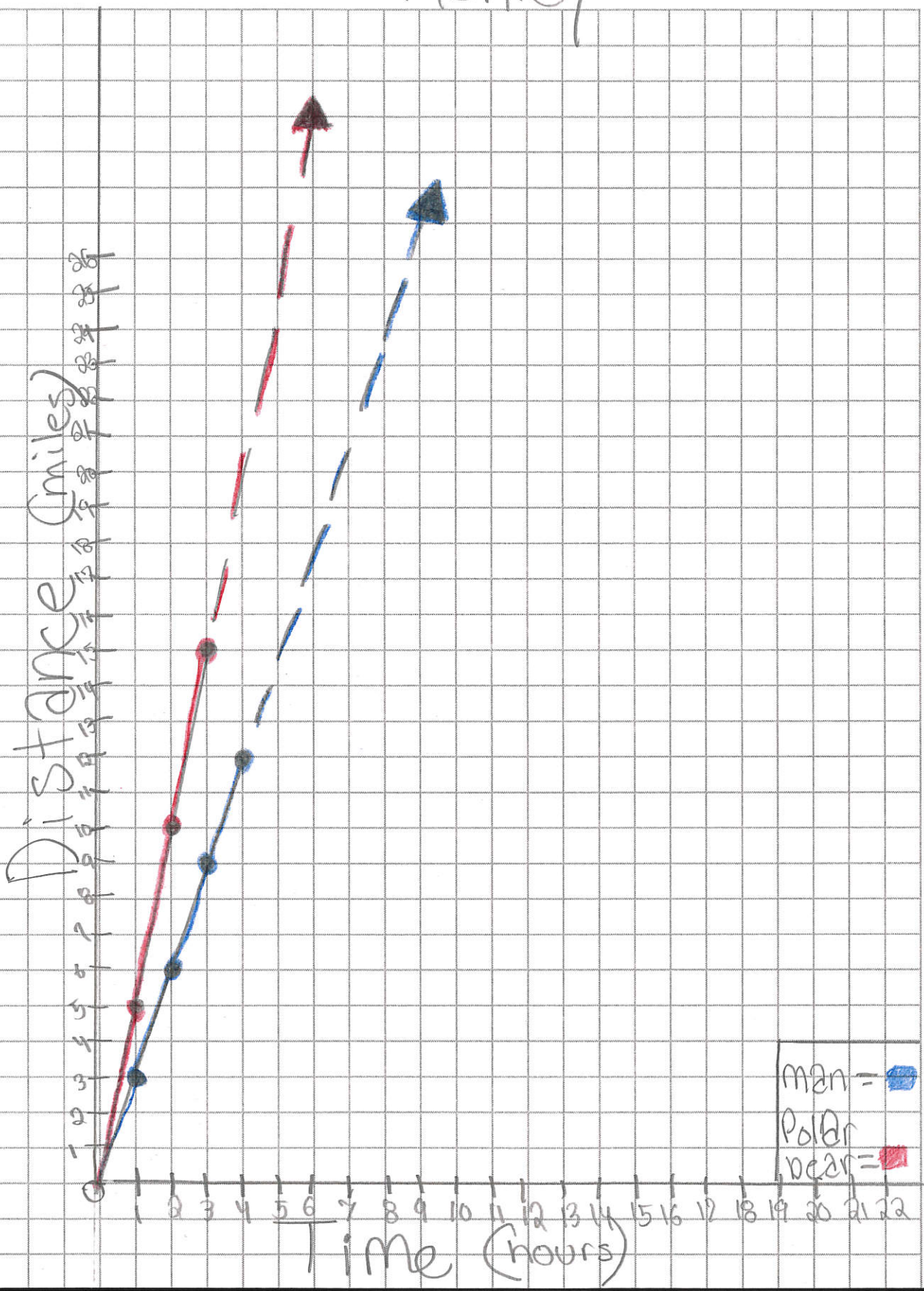


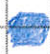
Legend
 — human
 — Polar bear



Ashley

YA



man = 
Polar bear = 