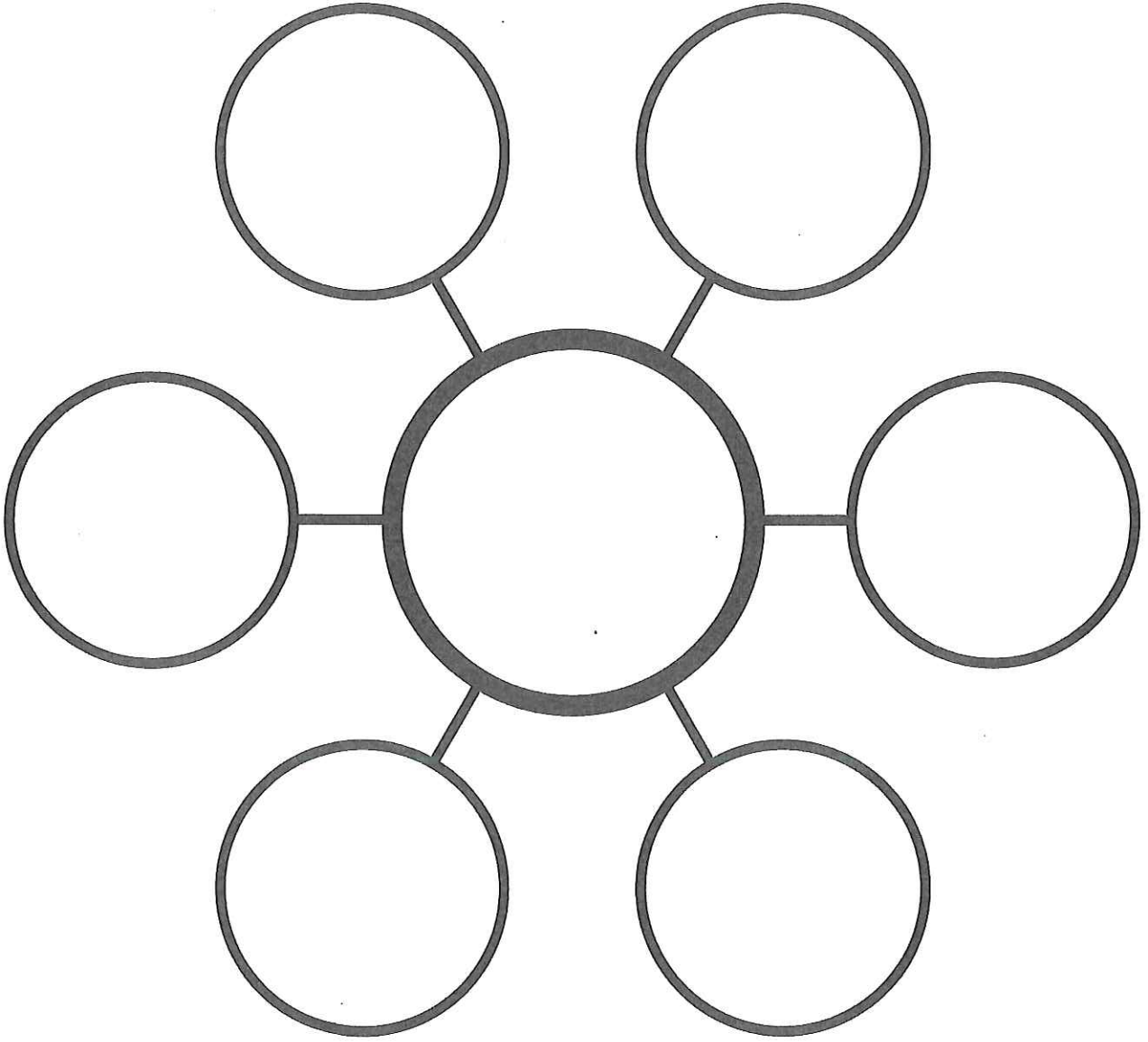
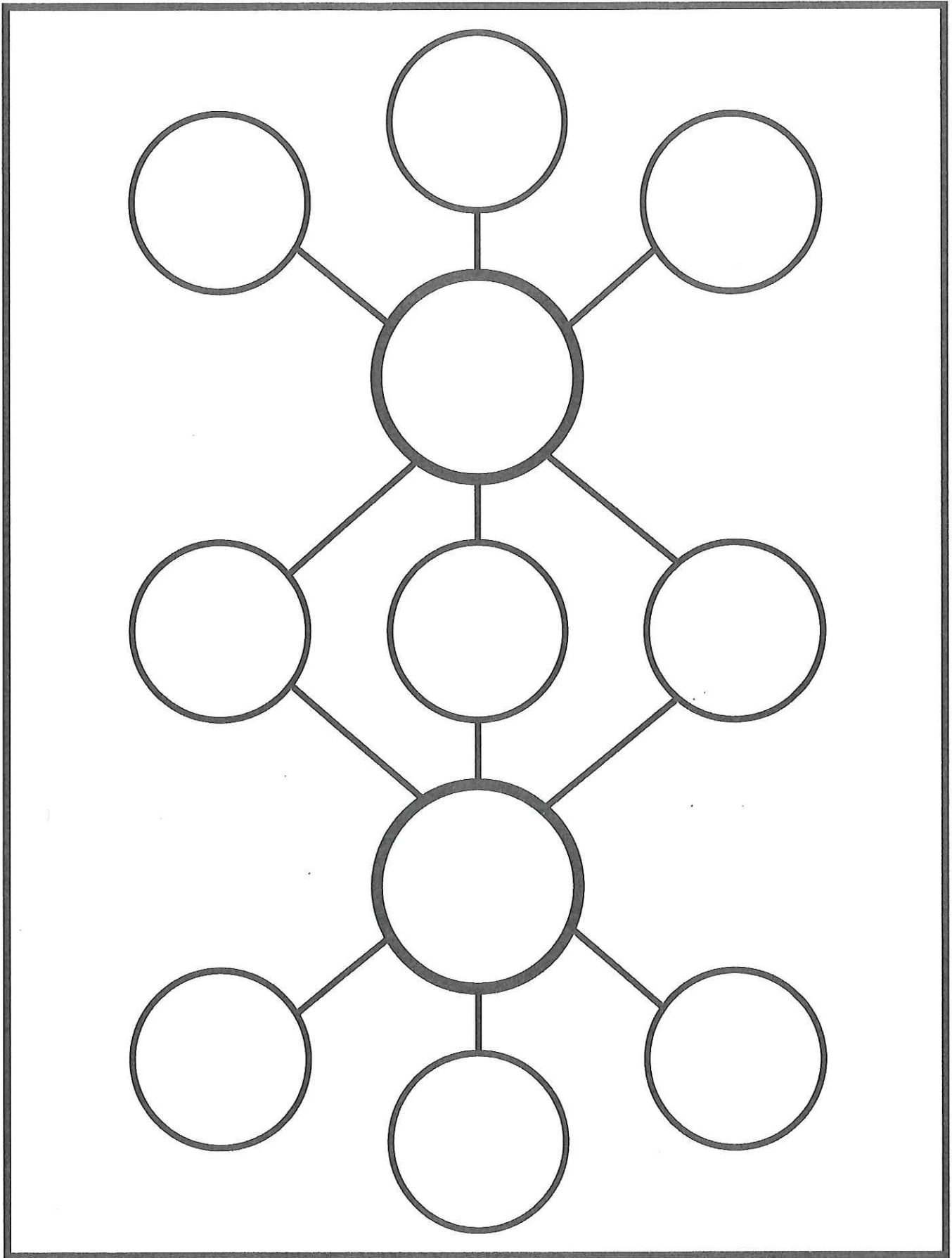


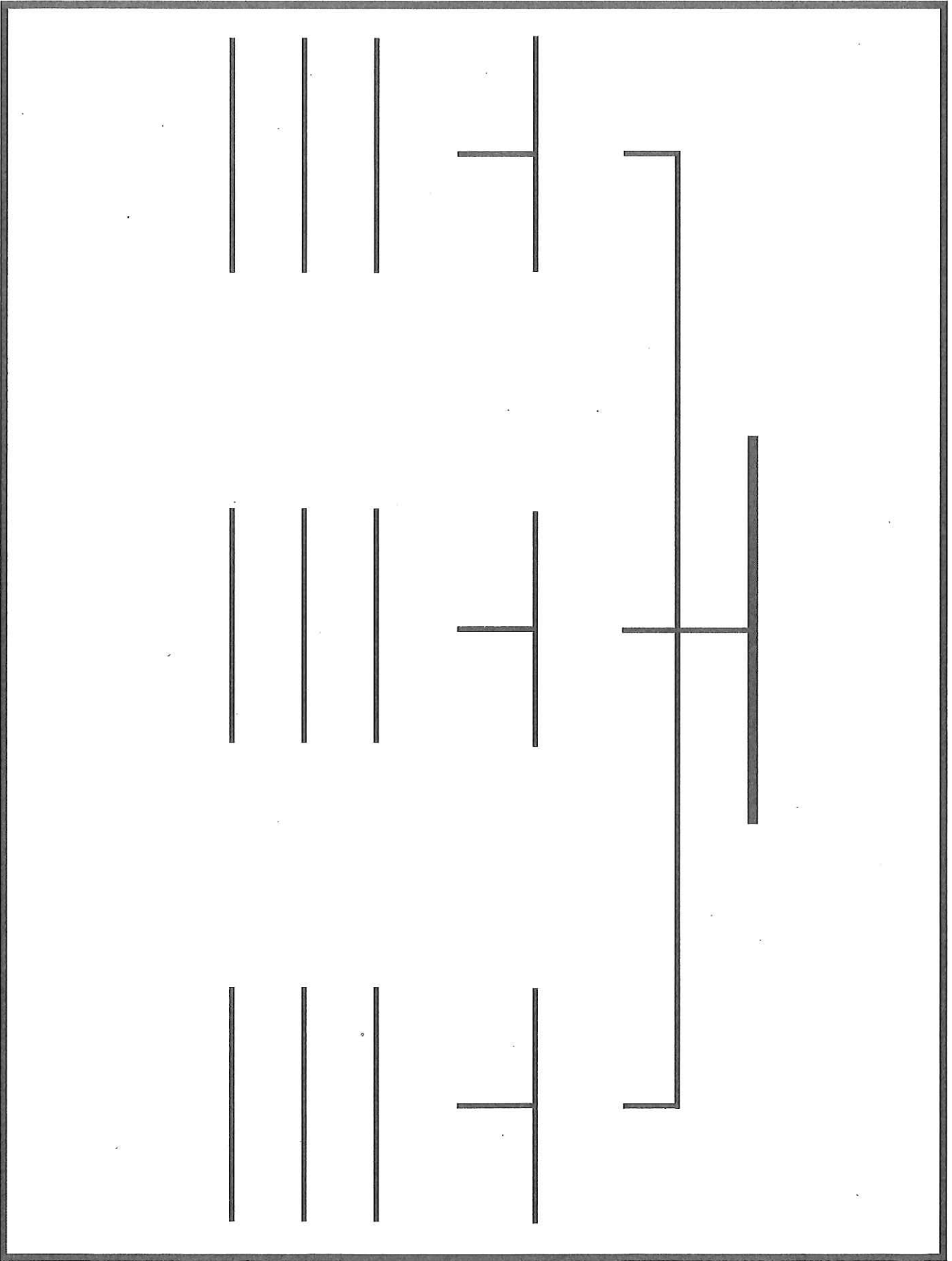
**Circle Map for Defining in Context**



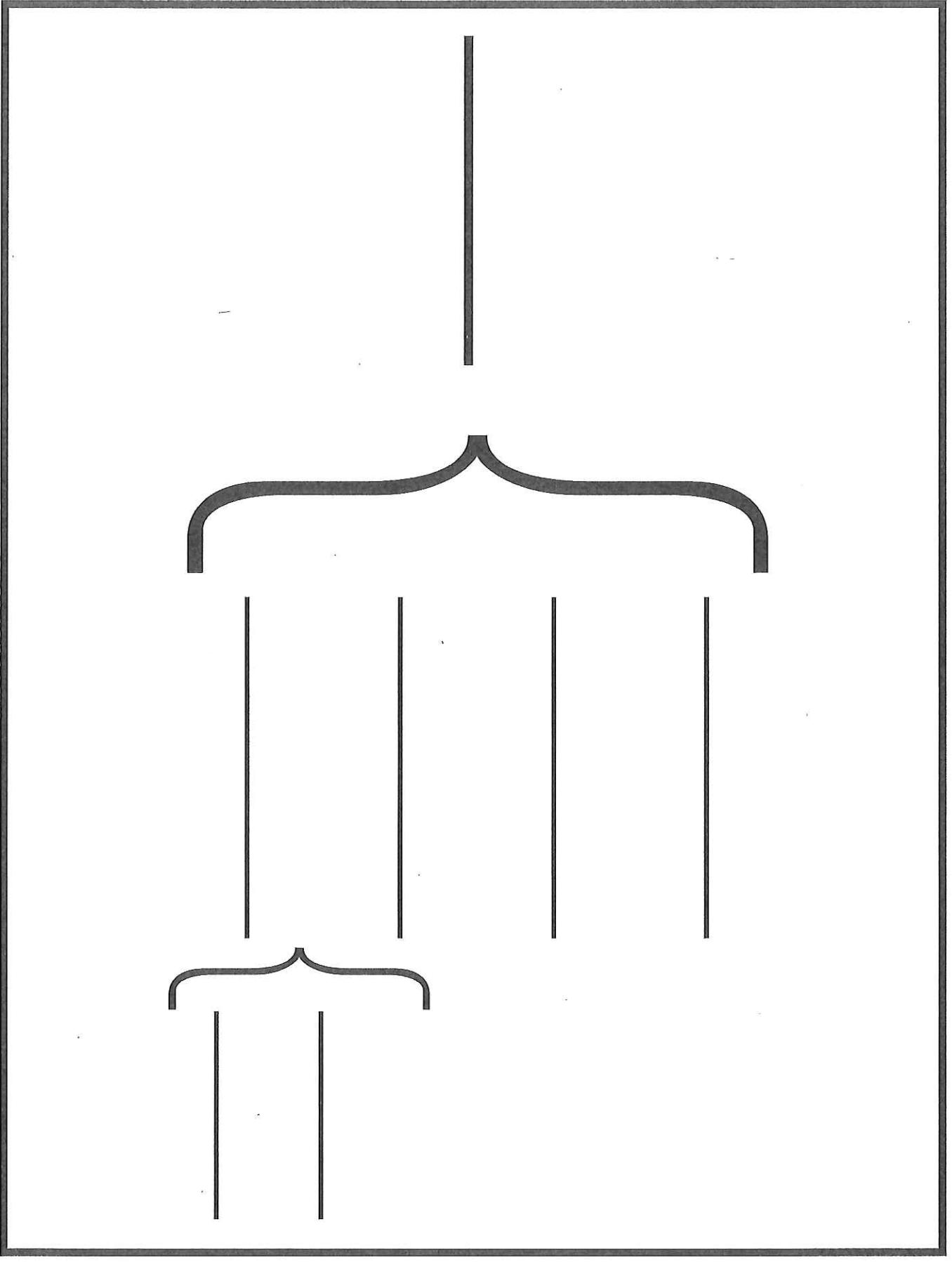
**Bubble Map for Describing**



**Double Bubble Map for Comparing and Contrasting**



**Tree Map for Classifying**



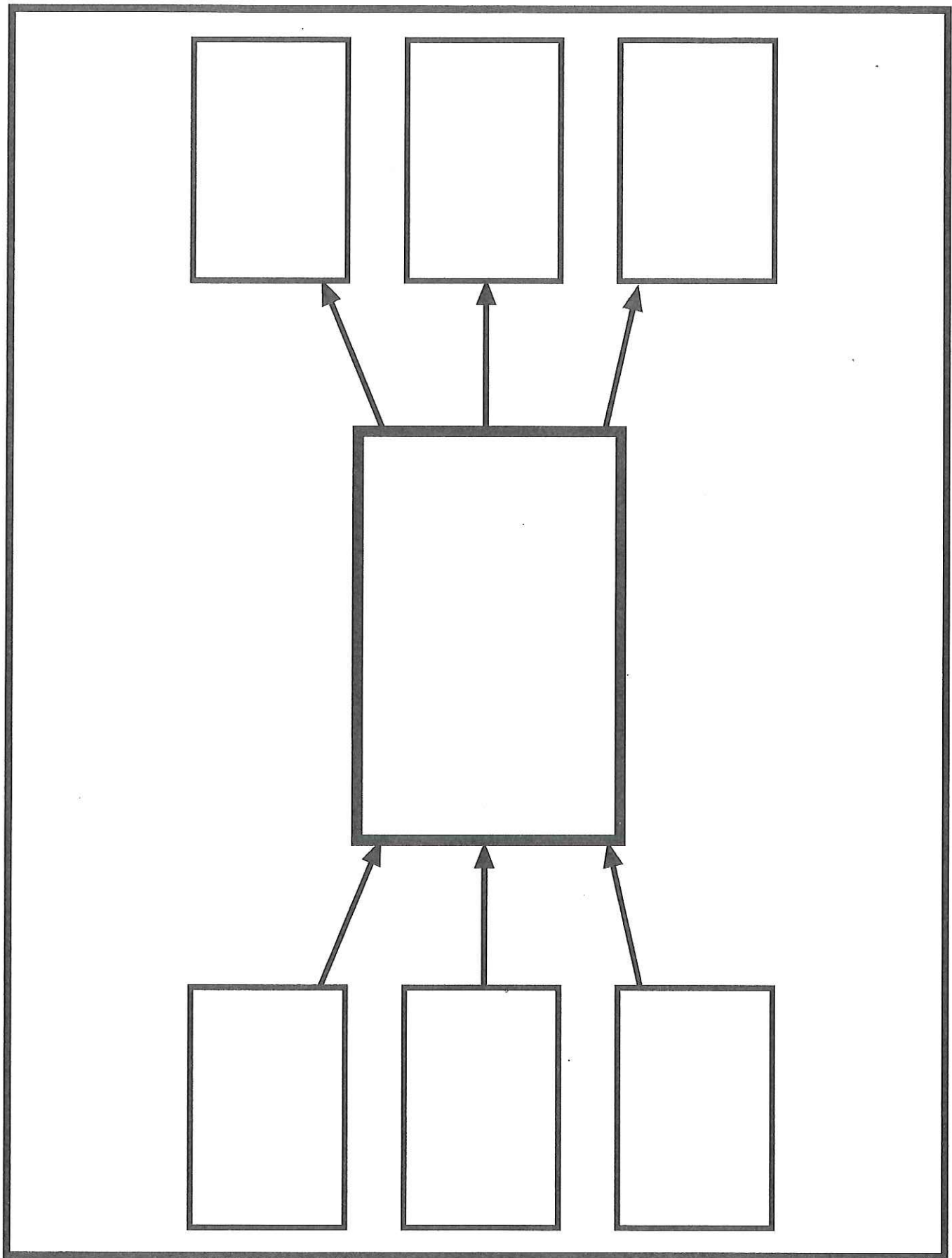
**Brace Map for Whole-Part Relationship**



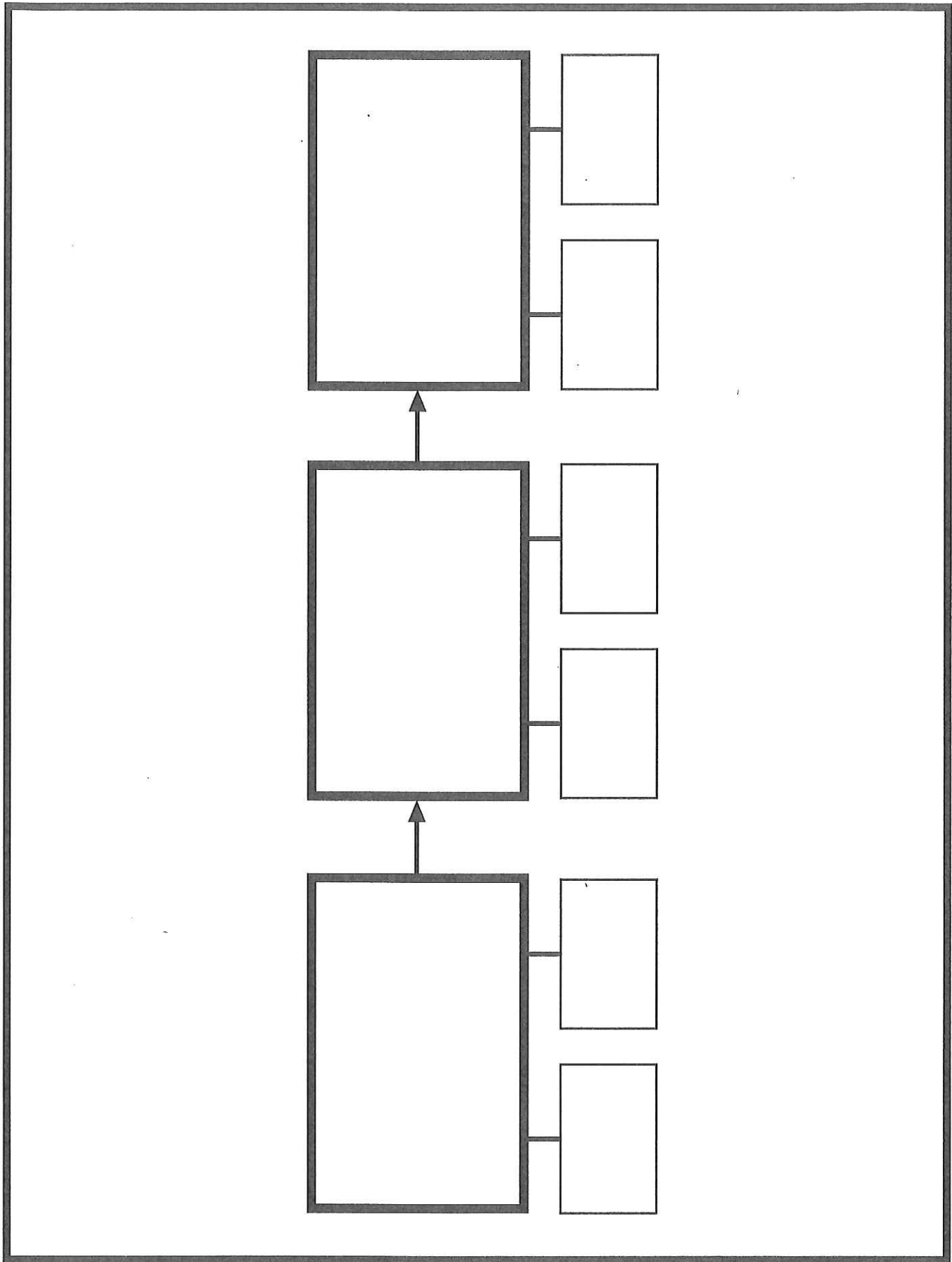
as

Relating Factor

**Bridge Map for Seeing Analogies**



**Multi-Flow Map for Cause and Effect**



**Flow Map for Sequencing**